



öko skin

slat wall panels made of
glassfibre reinforced concrete

Beton lebt.



RIEDER

As beautiful as wood,
as sustainable as concrete!



Concrete lives. | Glassfibre reinforced concrete is a natural material. The raw materials used for the production of öko skin create a specific surface appearance which is typical for concrete.



Flexible applications | öko skin can be used for large-scale facades as well as for small projects such as porches, conservatories, patios, garden sheds, garages, fences and many more.



Durability | Facades clad with öko skin slat wall panels require minimum maintenance. Unlike wooden claddings, glassfibre reinforced concrete doesn't require sealing or painting.



Easy to install | The slat wall panels have a very convenient size and can be mounted and processed on site - both by professionals and skilled do-it-yourselfers.



Fire resistance | öko skin is totally fire resistant thanks to fire protection class A1 (incombustible according to DIN 4102) and therefore a safe alternative to traditional wood panelling.



Sustainability | Rieder sets itself high standards in the protection of the environment (ISO 9001 and ISO 14001 standard). The Environmental Product Declaration EPD provides detailed figures of its eco-balance.



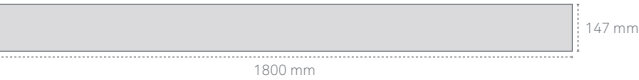
o with two dots | ö is a character used in several Latin alphabets. The pronunciation of ö is like „i“ in „Sir“. ö can be transcribed as „oe“ and is a typical character of Austria. The ö of öko skin stands for Österreich (Austria), ökologisch (ecological) and ökonomisch (economical).



Sizes

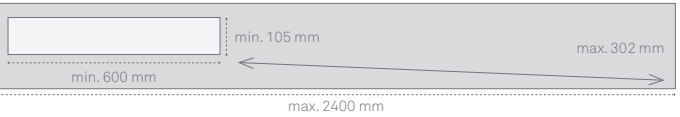
öko skin standard

Format 1800 x 147 x 13 mm | Dead load 7.9 kg/slat



öko skin flex

Other formats within a width of 105 to 302 mm and within a length from 600 to 2400 mm are available on request. | Dead load 26 kg/m²



Please refer to "öko skin characteristics" on www.rieder.cc for more details. | The slats can be cut to size and holes can be drilled by the craftsmen directly on site. Edges don't require sealing after cutting the slats.

Colours

öko skin is through colour including iron oxide and natural additives. The natural, authentic colours of öko skin fit well in landscapes and blend with nature and the environment. Each palette includes the three surfaces ferro, ferro light and smooth which create a naturally varied and vivid surface. The extended colour palette includes 12

colours, two additional grey shades create a smooth transition from polar white to liquide black, and is compatible with fibreC panels.

This play of colours within a certain colour shade is intentional and enhances the vivid character of concrete.

	polar white	off-white	ivory	silvergrey	chrome	anthracite	liquide black	sahara	sandstone	terra	terracotta	green
SM smooth												
FL ferro light												
FE ferro												

Installation

öko skin slat wall panels are used as facade cladding and mounted on a substructure. They can be installed both horizontally and vertically. öko skin slats can be fastened with screws to a wooden substructure or with rivets or adhesive to an aluminium substructure. Screws and rivets are available in colour matched finish. öko skin flex can be also installed as lap siding.

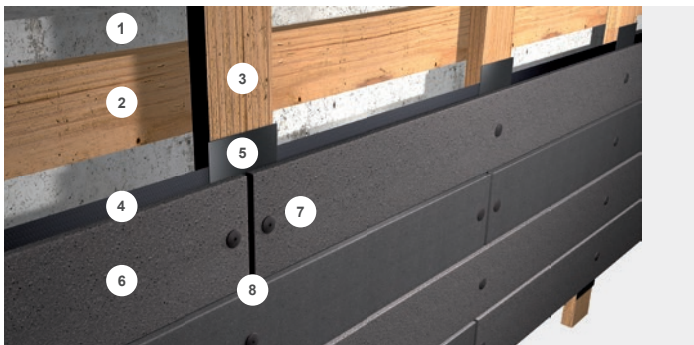
NEW | Concealed fastening



For further details on the processing and mounting of öko skin slat wall panels please refer to the "öko skin installation instructions" on www.rieder.cc. Please refer to country-specific regulations regarding mounting and installation!

Assembly principle: screws on wooden substructure

- 1 wall / brickwall
- 2 counter battening, opt. insulation
- 3 main battening
- 4 sheets for waterproofing
- 5 waterstop / joint tape
- 6 öko skin slat wall panels
- 7 screw
- 8 open joint



Layout examples



öko skin flex 125 mm,
various colours, vertical
installation, screwed on
wooden substructure



öko skin 147 mm,
silvergrey, vertical
installation (1/3 shifted),
screwed on wooden
substructure



öko skin flex 147 mm,
various colours, vertical
installation, rivets on
aluminum substructure



Coming soon!
öko skin 147 mm,
anthracite vintage,
horizontal installation
(1/2 shifted), glued on
aluminum substructure



Rieder Smart Elements GmbH

Mühlenweg 22 | 5751 Maishofen | Austria
T +43 6542 690 844 | F +43 6542 690 855
oeoskin@rieder.cc | www.rieder.cc